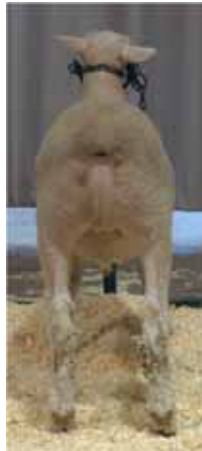




1

Live Weight: 135 lb.
Dressing %: 56.3
Adjusted Fat: .12
Ribeye area: 3.4
Leg Score: 13
Yield Grade: 1.6
Quality Grade: CH



2

Live Weight: 156
Dressing %: 62.2
Adjusted Fat: .35-.45
Ribeye area: 2.9
Leg Score: 12
Yield Grade: 4.9
Quality Grade: PR-



3

Live Weight: 163
Dressing %: 56.4
Adjusted Fat: .17
Ribeye area: 3.6
Leg Score: 14
Yield Grade: 2.1
Quality Grade: CH+



4

Live Weight: 163
Dressing %: 56.4
Adjusted Fat: .18-.22
Ribeye area: 3.2
Leg Score: 14
Yield Grade: 2.6
Quality Grade: CH